



WaterFurnace.
Smarter from the Ground Up®

Geothermal Comfort System

5 Series
500R11





The 5 Series

Smarter from the Ground Up™

As the upgrade to our popular Envision product line, the 5 Series® carries some of our best features and efficiencies. The 5 Series upholds the standards we've set over three decades and the trust associated with the WaterFurnace name. Every unit is computer run-tested to ensure flawless performance at start-up—and in the unlikely event your equipment needs service, it's backed by the best warranties in the industry. The 500R11 features advanced components to offer a level of comfort and savings that's far greater than any ordinary system and represents an amazing 27.8 EER and 4.6 COP.

The 500R11 is engineered for use where an all-in-one unit would be difficult to install, like attics or crawl spaces, and is the perfect solution for retrofitting existing homes. By connecting to the WaterFurnace W5B Air Handler, the 500R11 can provide ultra-efficient heating, cooling, and even a portion of your home's hot water. The 500R11 is also great for use in extremely cold climates where a dual fuel application is ideal. The unit uses the clean, renewable, comfortable energy from the earth and switches to fossil fuels only during the coldest parts of the winter. It's ENERGY STAR rated and was developed in the HVAC industry's only in-house EPA/ENERGY STAR Recognized Laboratory. Tap into the earth to achieve a level of comfort you have to experience to believe.



Why Geothermal?

Geothermal is perfect for those who want to dramatically reduce their energy usage, save money on bills, and enjoy a more even, consistent comfort in their home. Over the next few pages we'll tell you a little more about geothermal and show you how you can benefit from a technology that's *Smarter from the Ground Up™*.

Comfort that gives back

Geothermal's benefits

Geothermal heat pumps are not only the most comfortable way to heat and cool, they're also the most cost effective. They're versatile enough to excel in almost any home or any environment, and you'll find geothermal in more than 1 million households across Canada and all 50 U.S. states. They can be scaled for single-family homes to entire college campuses. In fact, we heat and cool our entire 325,000 square-foot headquarters with WaterFurnace equipment. Here are a few reasons why geothermal is one of the fastest growing technologies available for your home.

Save More with Local Incentives

Geothermal systems deliver exceptional energy efficiency that can significantly reduce monthly heating and cooling costs for homeowners. At the same time, they help utilities by easing the strain on the electric grid and reducing peak demand. Because of these grid benefits, many state, local, and utility programs offer incentives that help lower installation costs—making geothermal more affordable. Check what's available in your area to maximize your savings.



Safe

Because no natural gas, propane, or oil is used in a geothermal installation, it's the safest method of heating and cooling available for your home. And when the 500R11 is installed with an existing fossil fuel furnace for backup, the majority of heating is done with geothermal so minimal fossil fuels are used.



Comfortable

WaterFurnace units are designed to run more often at low speeds to provide stable temperatures throughout the home and help eliminate hot or cold spots. They provide a comfort you need to experience to believe. To achieve precise control over temperatures in up to 4 areas, add our IntelliZone2 zoning system.



Reliable

Because geothermal units aren't subjected to the punishing effects of outdoor weather or fuel combustion, they last longer than nearly any other heating and cooling system. According to the American Society of Heating, Refrigerating, and Air-Conditioning Engineers, geothermal units have an average equipment life of 25 years while the underground loop system has a rated material life of more than 100 years. Ordinary air conditioners, furnaces and heat pumps are rated for only 12-18 years.



Quiet

WaterFurnace systems don't require noisy outdoor units that can disturb your peaceful surroundings or create unsightly additions to your home's appearance. We've also taken a number of steps to ensure your unit is as quiet as possible so you can enjoy the peaceful, clean comfort that only geothermal can provide.



The Latest Low GWP Refrigerant

Geothermal systems are recognized by the United States Environmental Protection Agency as the most environmentally friendly, cost effective and energy efficient heating and cooling technology available. And now our systems utilize a low GWP (global warming potential) refrigerant R-454B. These systems also minimize the threats of acid rain, air pollution, the greenhouse effect and global warming—problems directly linked to the burning of fossil fuels. In fact, installing a single geothermal unit is the environmental equivalent of planting 750 trees or removing two cars from the road.



Cost Effective

Because of the extraordinary efficiency of a WaterFurnace system, most homeowners save more on monthly bills than they pay for the system when installation costs are added to the mortgage. Any added investment over traditional equipment is usually recovered in just a few years, and many homeowners see a return on investment of 10-20% over the life of the system.



No Fossil Fuels

When installed with a WaterFurnace Air Handler, no fossil fuels are used in a 500R11 installation. WaterFurnace systems don't create heat—they simply move it to and from the earth. Since there are no fossil fuels, geothermal comfort is the cleanest method of heating and cooling available today.



Flexible

One compact WaterFurnace unit provides heating, central air conditioning, and supplemental domestic hot water for your entire home. Both indoor and outdoor splits are available for a wide range of home applications, including newly constructed as well as existing homes. No matter what climate you live in, your WaterFurnace system will deliver.



Energy Efficient

WaterFurnace systems are rated number one in energy efficiency because they can deliver more than five units of energy for every one unit of electrical energy used. Compare that to even the best ordinary system that delivers less than one unit of energy for every unit it consumes. That translates into an efficiency rating exceeding 440%, compared to the most efficient gas furnace which rates only 98%.

Using the earth to heat & cool

The geothermal difference

A geothermal heat pump (GHP) taps into the renewable solar energy stored in the ground to provide savings up to 70% on bills. Using a series of underground pipes, it exchanges heat with the earth instead of outdoor air. While air temperatures can vary greatly from day to night or winter to summer, the temperature just a few feet below the earth's surface stays an average 55°-70°F year-round.

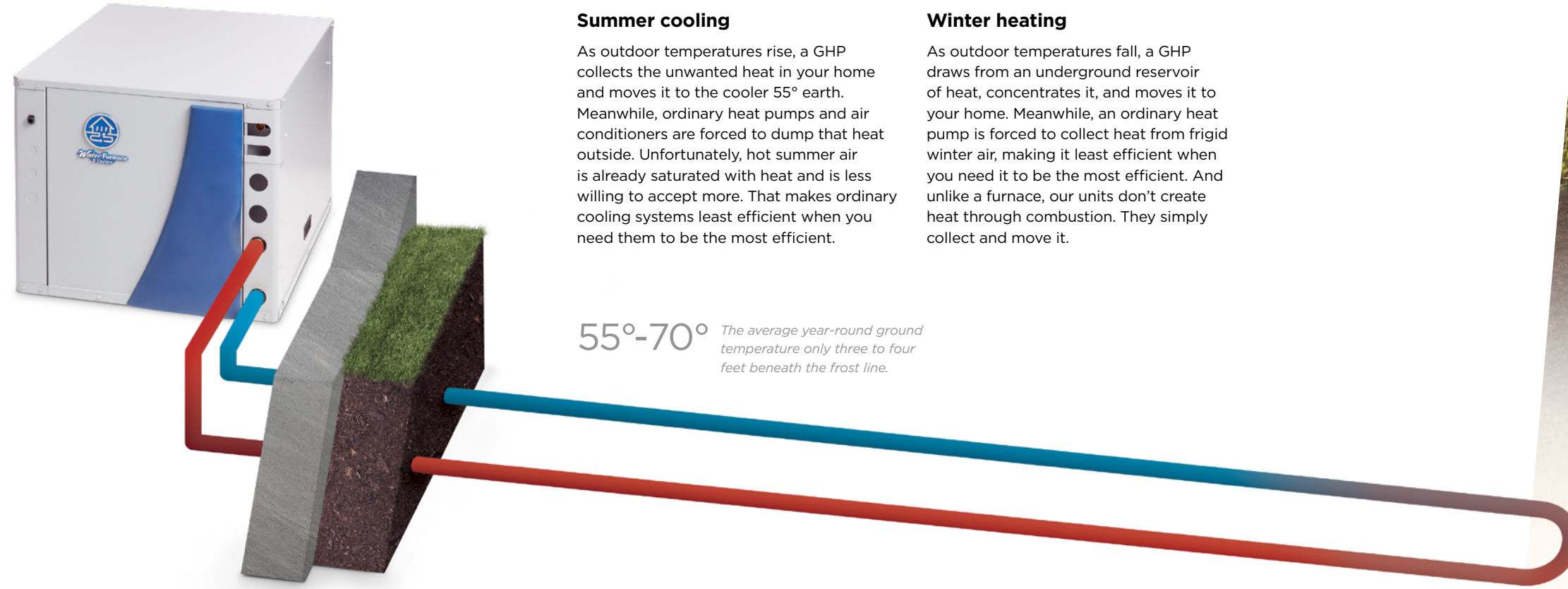
Summer cooling

As outdoor temperatures rise, a GHP collects the unwanted heat in your home and moves it to the cooler 55° earth. Meanwhile, ordinary heat pumps and air conditioners are forced to dump that heat outside. Unfortunately, hot summer air is already saturated with heat and is less willing to accept more. That makes ordinary cooling systems least efficient when you need them to be the most efficient.

Winter heating

As outdoor temperatures fall, a GHP draws from an underground reservoir of heat, concentrates it, and moves it to your home. Meanwhile, an ordinary heat pump is forced to collect heat from frigid winter air, making it least efficient when you need it to be the most efficient. And unlike a furnace, our units don't create heat through combustion. They simply collect and move it.

55°-70° *The average year-round ground temperature only three to four feet beneath the frost line.*



Note: Illustration represents how geothermal works and is not to scale. Loops are generally 4-6 feet below the earth's surface and between 150-400 feet long.



Traditional Air Conditioner

Summer air is already saturated with heat and is less willing to accept more. Thanks to the constant temperature of the earth, geothermal is more than twice as efficient at cooling than any ordinary heat pump or air conditioner.

Fossil Fuel Furnace

Ordinary furnaces return less than 98¢ of heat for each dollar spent burning polluting fossil fuels, while a geothermal system returns up to five dollars of heat for each dollar spent on electricity. That's because our units don't create heat through combustion. They simply collect and move it.



The heart of a geothermal system

Geothermal earth loops

A geothermal system uses a series of underground pipes called a “loop.” The earth loop eliminates the need for fossil fuels. It’s the heart of a geothermal system and its biggest advantage over ordinary heating and cooling technologies. The type of loop used is based on available land space and installation costs for specific areas.



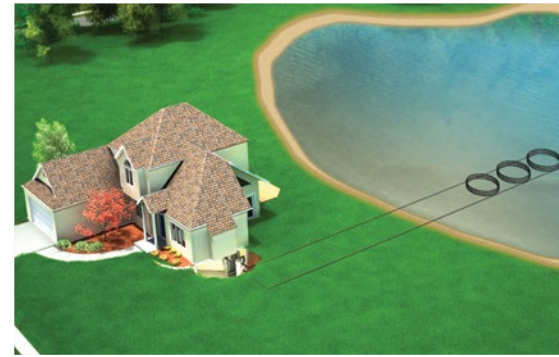
Horizontal Loop

Used where adequate land is available, horizontal loops involve one or more trenches that are dug using a backhoe or chain trencher. High density polyethylene pipes are inserted, and the trenches are backfilled. A typical home requires 1/4 to 3/4 of an acre for the trenches.



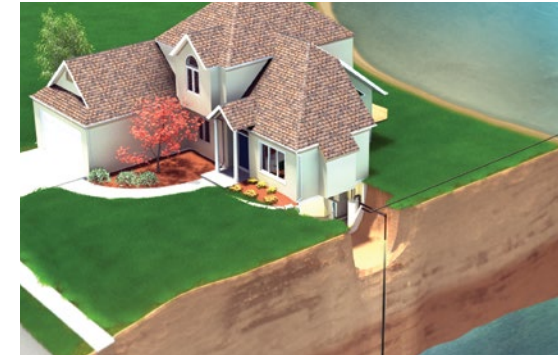
Vertical Loop

Vertical loops are used when space is limited. Holes are bored using a drilling rig, and a pair of pipes with special u-bend fittings is inserted into the holes. A typical home requires three to five bores with about a 15-foot separation between the holes.



Pond Loop

If an adequately sized body of water is close to your home, a pond loop can be installed. A series of coiled, closed loops are sunk to the bottom of the body of water. A 1/2 acre, minimum 8-foot deep pond is usually sufficient for the average home.



Open Loop

An open loop is used where there is an abundant supply of quality well water. The well must have enough capacity to provide adequate flow for both domestic use and the WaterFurnace unit. 5 Series units require 3-10 GPM, depending on size.



Directional Bore

Perfect for homeowners who need minimal landscape disruption, these loop types take advantage of the space available below ground. A directional bore loop can be installed either vertically or horizontally depending on yard space.

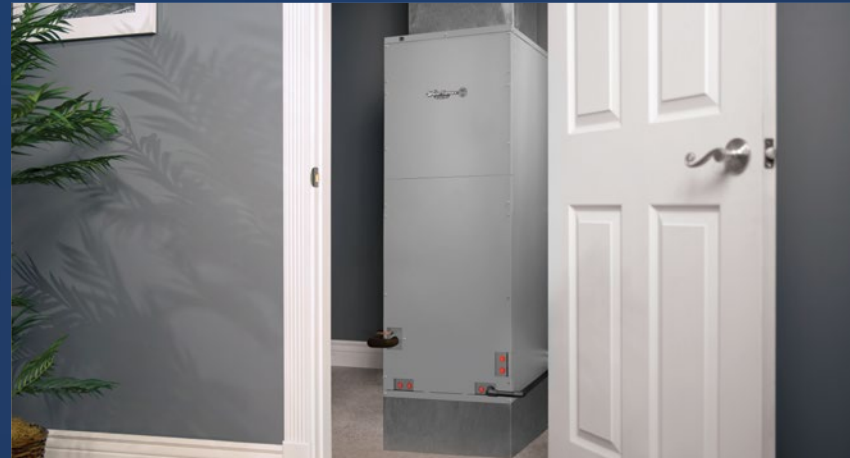


Split configuration for maximum flexibility

The 5 Series technology

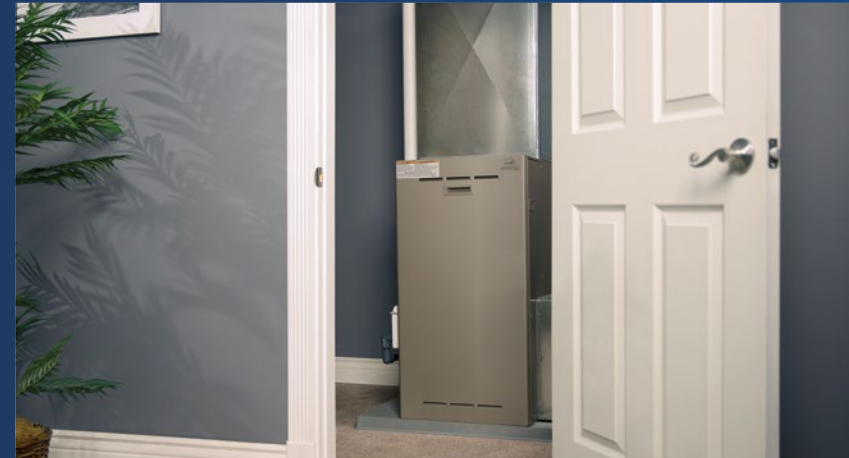
WaterFurnace 5 Series Splits are engineered for homes with limited indoor utility space or in cold winter climates where a dual fuel application is desired. By installing the 500R11 with our W5B Air Handler, you can heat, cool, and provide a portion of your home's hot water efficiently and effectively. In areas with very cold winters, a dual fuel application can be a good option. In this application, the geothermal unit is paired with an existing fossil fuel furnace and a cased or uncased coil and can automatically choose which method of heating is most efficient—saving you money. That's both smart and flexible.

Which configuration is right for your home comfort?



Paired with an W5B Air Handler—all geothermal

The W5B Air Handler is a perfect match to the 500R11. It features an ECM blower motor for the ultimate in efficiency and electric backup heat for those rare instances where you need an extra boost of heating. It's field convertible and offers quiet and efficient comfort.



Paired with a fossil fuel furnace—dual fuel

By installing the 500R11 with the WaterFurnace A-Coil and an existing fossil fuel furnace, the system can select the most efficient method of heating and switch between fossil fuel and geothermal. Perfect for colder climates, a dual fuel application will always keep you warm and cozy.



Compact design meets ultimate performance

Components of the 5 Series



Design Components:

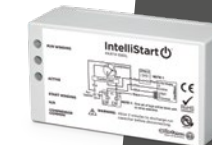
- 1. Cabinet:** The cabinet comes standard with a professional grade finish for long-lasting beauty and protection. The system is fully insulated for quiet operation with cleanable foil-backed insulation.
- 2. Aurora Interface Diagnostic Port:** WaterFurnace is the first to offer an external communication port, which allows service and diagnosis of our units without ever having to open them.
- 3. Hot Water Generation:** With an optional hot water assist, the 5 Series 500R11 preheats your water and delivers it to your water heater. The longer the unit operates, the greater the amount of hot water generated.
- 4. Split Configuration:** The 500R11 was designed to operate exclusively with the W5B Air Handler. It features an ECM blower motor for the ultimate efficiency and electric backup heat for those rare instances where you need an extra boost of heating. It's field convertible and offers quiet and efficient comfort.
- 5. ThermaShield™:** Our exclusive coaxial heat exchanger coating protects against condensation for temperatures below 50°F, extending its life.



- 6. Compressor:** For superb efficiency and reliability, dual capacity units utilize Scroll UltraTech™ compressors. All compressors are double isolation mounted for extra quiet operation.



- 7. Aurora Controls:** Comes standard with Aurora Advanced Controls, which offers two way communication between components, Energy monitoring and advanced troubleshooting capabilities. When paired with the Aurora WebLink (AWL), communication is enabled with the internet/smart grid and home automation networks. Optional Aurora Premium Controls adds Refrigeration and Performance monitoring, the most advanced diagnostics system in the industry.



- 8. IntelliStart:** This optional soft starter reduces start-up amperage by up to 60% of normal draw to reduce noise, eliminate light flicker, and increase compressor life.

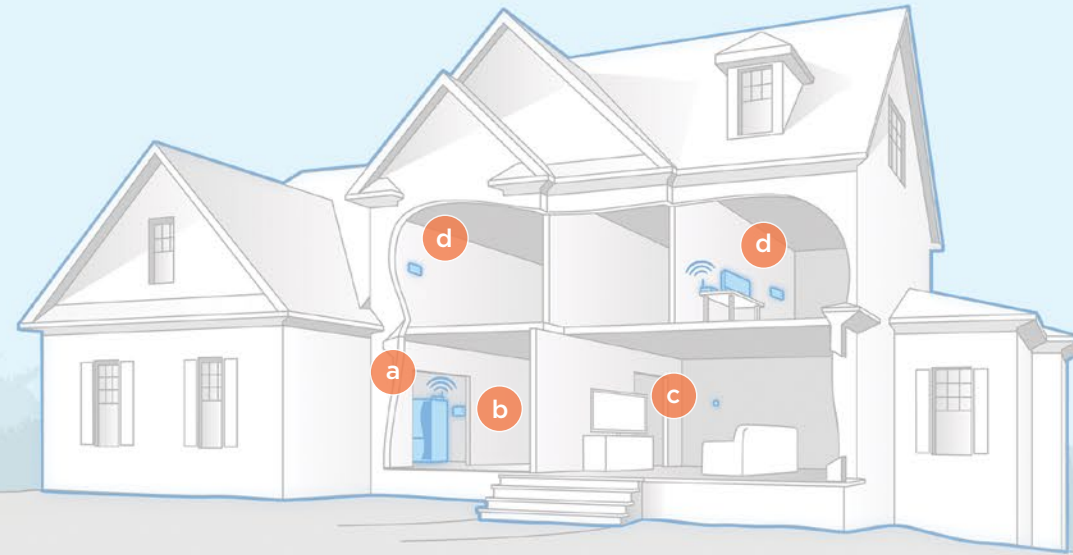
ISO/AHRI 13256-1		Closed Loop		Open Loop	
		Cooling EER	Heating COP	Cooling EER	Heating COP
024	Full Load	18.4	3.9	23.8	4.6
	Part Load	25.2	4.3	30.0	5.0
036	Full Load	19.8	4.2	25.2	5.0
	Part Load	27.8	4.5	33.8	5.1
048	Full Load	18.2	4.2	24.3	4.8
	Part Load	25.8	4.6	30.9	5.1
060	Full Load	18.2	3.9	23.7	4.4
	Part Load	25.4	4.2	30.5	4.7
066	Full Load	16.9	3.7	22.1	4.2
	Part Load	23.5	4.0	28.1	4.4



Finishing touches

Accessories

Choosing the right accessories can greatly improve the comfort levels in your home and can even allow you to expand the functions of your existing WaterFurnace system. Each item has been designed to work hand in hand with your system to allow flawless and convenient operation. Here are some of our most popular accessories. Visit waterfurnace.com for more.



Symphony Web-Enabled Home Comfort Platform

Imagine a platform that can provide detailed feedback of your comfort system in real-time and the tools to control it all from any web-enabled smart phone, tablet, or computer. That's Symphony. Symphony is a Wi-Fi based comfort platform that's unsurpassed in its ease of use, feature set and the level of information it provides. Symphony marries the Aurora controls of a WaterFurnace geothermal system with our WebLink router, giving you access to the comfort system from practically anywhere. Symphony is cloud-based so there's no software to install and provides control over the entire geothermal system-not just the temperature as in other 'smart thermostat' systems.



Symphony's compatibility with Amazon Alexa allows you to control your unit with voice commands.

- a. Aurora WebLink
- b. Symphony Thermostat
- c. Invisible Thermostat Capability
- d. Advanced Zoning System



Note: Depending on the control package not all Symphony features may be available.



TPCC32U03 Deluxe Touch-Screen

A beautiful communicating color touch-screen thermostat that provides intuitive comfort control. This programmable thermostat can also provide instantaneous and 13 month energy monitoring history.* The TPCC32U03 features 3 heat and 2 cool stages, dual fuel capabilities, Comfort Talk error communication, humidity control, outdoor sensors and more.

** Energy monitoring requires our AXB advanced controls.*



TP32U03A/04A Elite Programmable

This powerful thermostat is great for any system. It allows dual fuel capability, winter humidity control, text based output and Comfort Talk error communication.



IntelliZone2

The IntelliZone2 allows you to precisely control temperatures in up to four different areas with our dual capacity systems and up to six different areas with our variable capacity equipment. The result is the ultimate in comfort and cost savings. You've already chosen the finest heating and cooling system available; now choose the most advanced zoning system available to control it.

The IntelliZone2 24V option is also available for any WaterFurnace system not equipped with Aurora Advanced (AXB) Controls.



W5B Air Handler

Design exclusively for the 500R11 split unit, the W5B features a variable speed ECM fan motor for maximum comfort and efficiencies while maintaining a slim cabinet for ease of installation. Combining comfort with versatility, the W5B Air Handler can enhance your 5 Series 500R11 to provide the ultimate in heating and cooling for your home.



The WaterFurnace name has been synonymous with geothermal since we were founded in 1983. Over the years we've worked to innovate new technologies, integrate key trends and grow our core business to represent clean and sustainable solutions. Our units combine sound engineering with the highest levels of quality control to provide you with some of the most efficient heating and cooling systems on the planet. WaterFurnace—*Smarter from the Ground Up.*

ISO Accreditations:



visit us at waterfurnace.com



©2026 WaterFurnace International, Inc. WaterFurnace International, Inc., 9000 Conservation Way, Fort Wayne, IN 46809-9794. WaterFurnace has a policy of continual product research and development and reserves the right to change design and specifications without notice. ♻️ In an effort to minimize the environmental impact of this brochure, it was printed with a minimum of 10% post-consumer waste recycled paper.

BCW5-0021W 01/26